



→ The fastest

SoftCare² Juno



 **WashTec**

The fastest system for a highly successful washing business



← **2050 mm** →

Widened access track for large and small cars

SoftCare² Juno

The SoftCare² Juno brings high performance to your washing business with 4 washing elements and 6 dryers:

- Profitable system from 1200 washes per month
- First class design and manufacturing
- High-speed washes: washing and drying in less than 3 minutes
- Four design variants to choose from
- State-of-the-art technology, thought out down to the last detail
- Top washing and drying results

Excellence right down to the last detail

Rotating roof nozzle



→ FlexStream, the new 3-in-1 rotating roof nozzle for applying chemicals, high-pressure washing, and drying. Even more effective thanks to the unlimited rotating capacity of the nozzle in the front gantry.

High-speed wash



→ Car washes in record time for high vehicle throughput rate. Foam application, lateral high pressure, brush wash and drying in two passes.

Wheel wash



→ WheelJet, the perfect wash for small and large rims. The diagonal delivery always hits the centre of the wheel and even cleans 21" rims.

High pressure



→ Three swivelling full-jet nozzle pairs on each side ensure improved coarse dirt removal in the front, rear and side skirt areas.

Drying



→ Optimised side drying: Better air current guidance improves the vehicle drying result.

SofTecs²



→ SofTecs², the next generation in successful material. Gentle and kind to paint and surfaces, providing even more effective and better cleaning results.

The technical benefits for your business

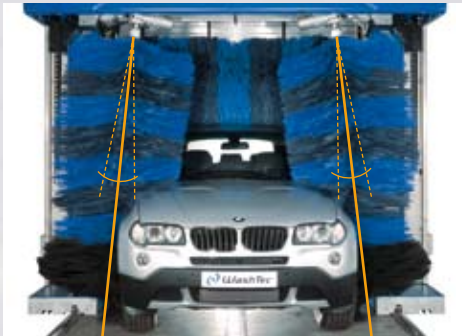
PRE - WASHING



Rotating roof nozzle – for an even better washing result

→ The multi-functional roof nozzle in the front gantry can be rotated in any direction on its axis and thus enables a targeted application of chemicals, an allround high-pressure wash even in the side skirt area, and contour-tracking drying. Optimum cleaning, even for hard-to-reach places, like the front and back.

WASHING



Adjustable side washers – complete wash, all-round cleaning

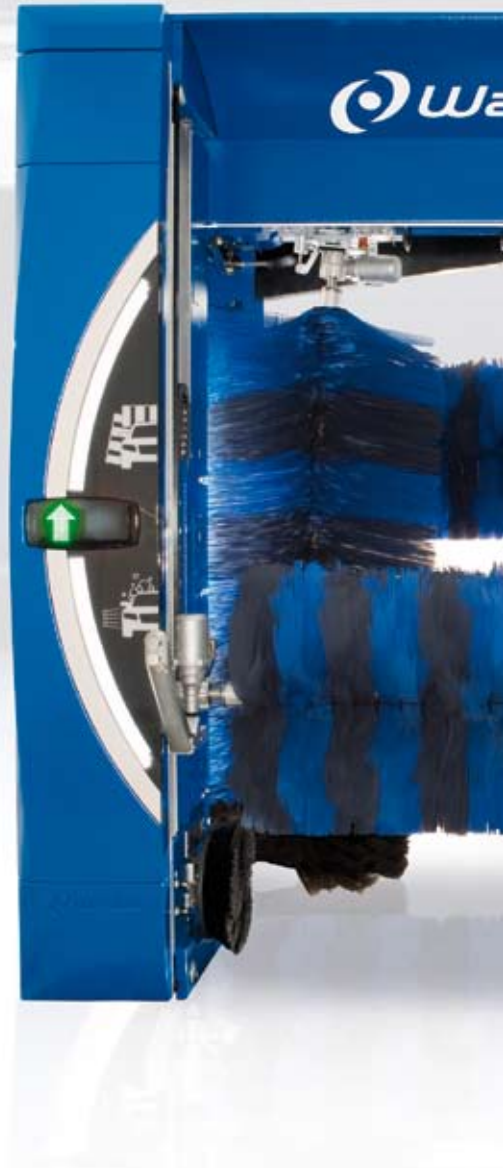
→ During washing, the side washers are inclined automatically at an angle matching the shape of the vehicle. This ensures an excellent washing result on all shapes of vehicle.

DRYING

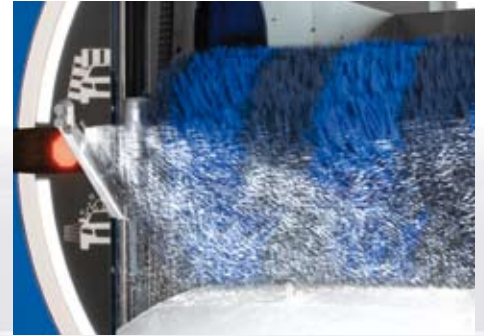


Optimum drying – more satisfied customers

→ Optimised flow characteristics of the side jets ensure improved drying of wing mirrors, door strips and front and rear areas.



Contour-tracking spraying – high efficiency



→ The contour-tracking spray arm system works close to the car, thereby guaranteeing the economical use of water and chemicals.

Ideal speed – more customer confidence



→ Frequency controls on the drive and lift motors ensure gentle operation and infinitely variable speeds. Components are put under less strain, and the system runs gently. Customers feel in safer hands.

Contour-tracking drying – a better result



→ The form-following of the roof dryer and optimised flow characteristics at the nozzle ensure reliable removal of water droplets from the vehicle. The roof dryer is available with swivelling or rotating options.



A wealth of options for EVEN MORE business

Gentle prewash



→ Use the pre-cleaning options to improve the washing result. You can choose from removal technologies, such as insect remover or hot foam, and various high-pressure versions to rinse off coarse dirt before the main wash.

Wheel washer



→ Drivers pay attention to clean rims. Use wheel washes with large diameters, the rim spray system or integrated high pressure to clean rims and generate customer satisfaction.

Under-body washing



→ An underbody wash is a sought-after service in winter and spring. Add to your service range with surface-mounted, subsurface-mounted, fixed or segment-controlled systems.

Waxing programs



→ Wax programmes care for vehicles and generate sales. Use cold wax, hot wax, foam wax, intensive preservation, foam polish or special wax programs to upgrade your programme structure and increase your average prices.

ProfitManager



→ Manage one or several systems with comfort and ease using the ProfitManager software. Generating statistics, programming wash cards and customer management are just some of the options available to you with ProfitManager.

3D CarScan



→ The high-tech option for perfect recording of contours. Allow your customers to also wash top boxes or other structures and add-ons. The 3D CarScan technology makes it possible.

Perfect dimensions – maximum business



- The optimum dimensions of 3.05 m, 3.20 m, 3.40 m, 3.60 m and 3.70 m are suitable for many different bays.
- This means improved business potential using the existing bay height
- Ideal washing heights of 2.25 m, 2.40 m, 2.60 m, 2.80 m and 2.90 m – perfect dimensions for current vehicle sizes

Machine design – individual design for effective advertising

CHRONO



STAR



MULTI



CLASSIC



- Attractive design with four variants: Classic, Star, Multi, Chrono
- High-quality 2-colour powder paintwork in a multitude of colour options

Operating terminals – a multitude of variants offering convenience and additional benefits



↑ **Operating terminal:**
Terminal for wall-mounting. Most cost-effective solution for a convenient input device

- ↑ **MultiBox** – three functions in one module:
 - Issuing wash tickets
 - Recording and checking transponder cards
 - Remote control of the car wash

↑ **Code:**
Attractive terminal for wall-mounting or floor attachment. Code entry via keypad, operating mode with or without cable connection, registration of all washing programmes

↑ **MultiBox:**
Code issuing device for the cash office



↑ **Card:**
Versatile wash card reader with transponder technology for contactless, wear-free reading, individual, multiple and prepaid card function, happy hour function

↑ **MultiBox:** Simple programming of the transponder card



↑ **Card + Code:**
Combined solution for all situations – individual wash via code with registration, multiple and prepaid cards with robust transponder cards which are not restricted to a promotional period

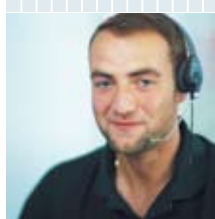
↑ **MultiBox:** A module for code issuing and programming of the transponder card



↑ **Code + Scan:**
The modern solution for extremely easy system operation with voucher and scanner, wear-free reading, individual, multiple and prepaid voucher function, happy hour function

↑ **MultiBox:** Simple issuing of the wash voucher via printer

The "World of WashTec" has everything for your success.



- **Comprehensive range:** The right solution for your washing business can always be found.
 - **Roll-over car washes** for low, medium and high washing volumes
 - **Conveyor tunnel systems** with modular design for all sizes and all requirements
 - **Commercial vehicle washes** for washing companies and in-house requirements
 - **Self-service washing equipment** with modular design for all needs and different location sizes
 - **Water treatment** – chemical-free and environmentally friendly
 - **WashTec chemicals** – Cleaning and care products for all car washes
- **Rapid service** 250 engineers in the field throughout Germany – **always in your neighbourhood.**
- **Customized financing plans:** We will promote your business at fair conditions.
- **Reliable experience:** Innovative car washing technology for more than 40 years. **More than 2 million cars are cleaned in WashTec washing facilities every day.**
- **Value for money services:**
 - **Site analysis** for optimum sizing of your business
 - **Cost-effectiveness calculations** help with your planning
 - **Sales training for staff** increases revenue
- **Tested quality** EN ISO 9001, 14001 certification – for your safety